



12 LAYFIELD CLOSE  
Bury, BL8 4BN  
Offers In The Region Of £540,000



# 12 LAYFIELD CLOSE

## Property at a glance

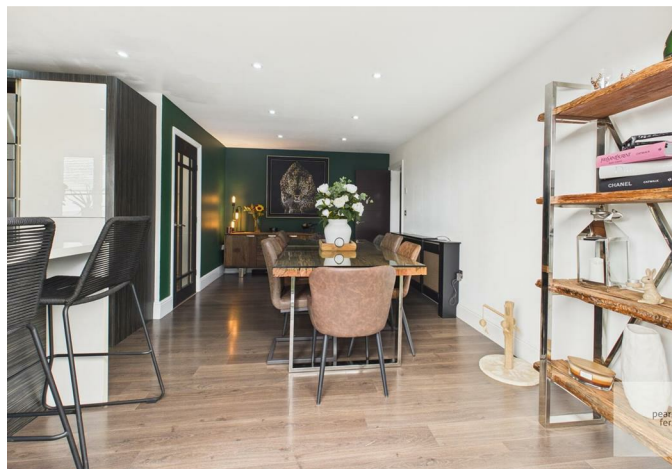
- DETACHED PROPERTY
- TOTTINGTON VILLAGE
- FOUR DOUBLE BEDROOMS (main bedroom en-suite)
- STUNNING OPEN PLAN KITCHEN/DINER
- CLOSE TO LOCAL AMENITIES
- IDEAL FAMILY HOME
- QUIET CUL-DE-SAC
- VIEWING HIGHLY RECOMMENDED

Stunning detached house located on Layfield Close in the desirable village of Tottington. This delightful property boasts four spacious bedrooms, making it an ideal family home. The well-proportioned reception room offers a warm and inviting space for relaxation and entertaining guests. The location is within walking distance of the village centre with its local shops, schools, restaurants, bars and health centre yet with local countryside being on your doorstep. The property really must be viewed to appreciate the vendors attention to detail and the quality of the fixtures & fittings installed. The main bedroom is particularly noteworthy, with en-suite and featuring stunning views that provide a serene backdrop to your daily life.

Set in a peaceful cul-de-sac, this property combines comfort with the beauty of its surroundings. With ample space and a versatile layout, it is perfect for those seeking a tranquil yet vibrant community. This home is not just a place to live; it is a place to create lasting memories.

Do not miss the opportunity to make this wonderful house your new home.

Tenure - Leasehold - 999 years from 29 September 1967  
Ground Rent £10  
Council Tax Band - D  
EPC-C







Bury Office  
435/7 Walmersley Road, Bury, Lancashire, BL9 5EU  
Telephone: 0161 764 4440  
Fax: #  
Email: bury@pearsonferrier.co.uk

www.pearsonferrier.co.uk

All statements contained in these particulars are for indicative purposes only and are made without responsibility on the part of Pearson Ferrier and the vendors of this property and are not to be relied on as statements or representations of fact. Potential purchasers should satisfy themselves by inspection or otherwise as to the accuracy of such details contained in these particulars.

